

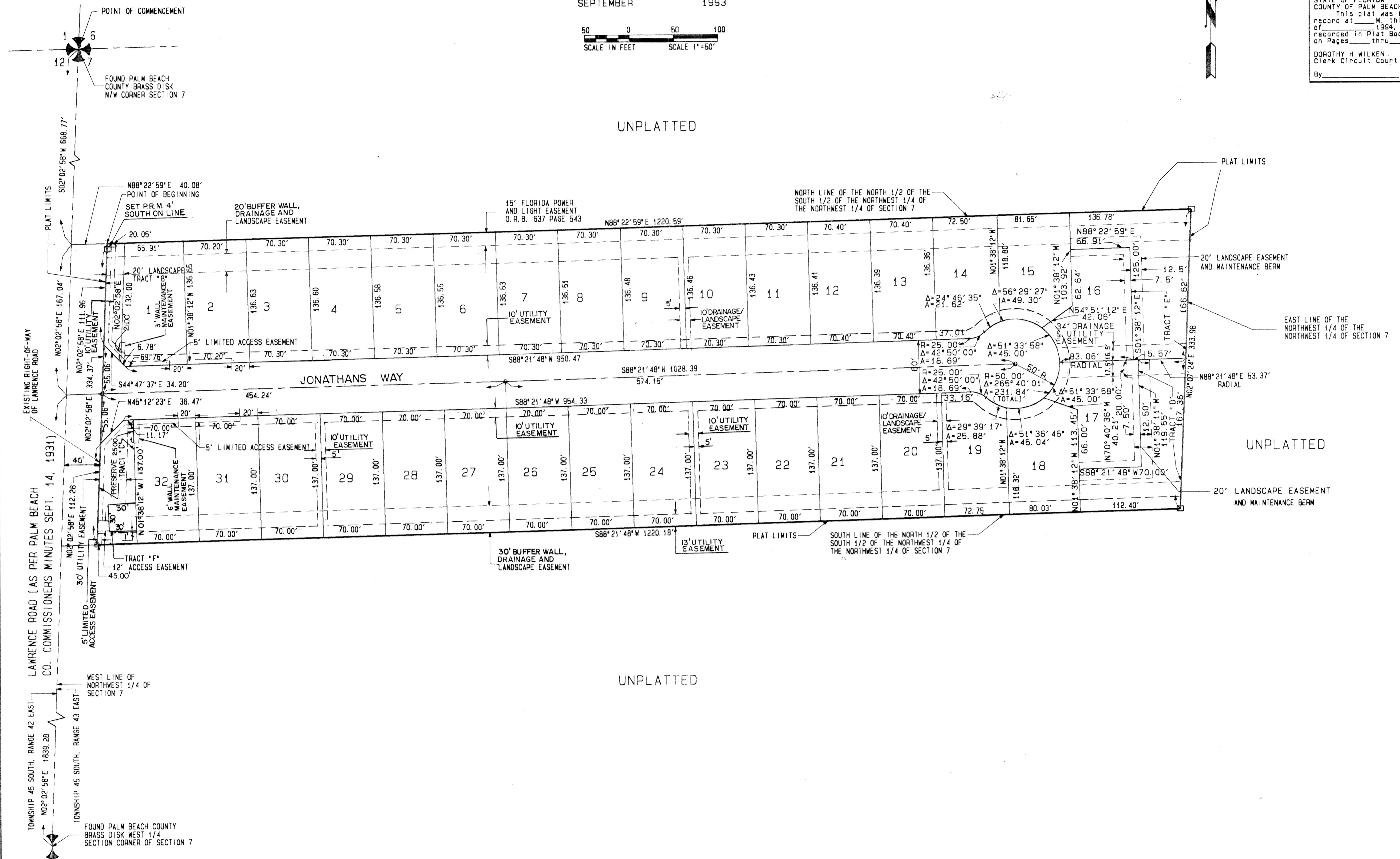
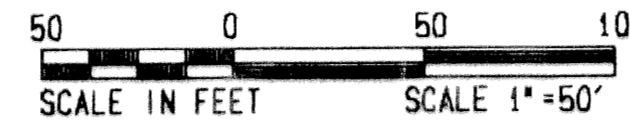
# JONATHANS GROVE

IN PART OF SECTION 7, TOWNSHIP 45 SOUTH, RANGE 43 EAST  
 PALM BEACH COUNTY, FLORIDA  
 CITY OF BOYNTON BEACH  
 IN TWO SHEETS SHEET NO. 2

GEE & JENSON  
 ENGINEERS - ARCHITECTS - PLANNERS, INC.  
 WEST PALM BEACH, FLORIDA  
 SEPTEMBER 1993

16

STATE OF FLORIDA  
 COUNTY OF PALM BEACH  
 This plat was filed for  
 record at \_\_\_\_\_ M. this \_\_\_\_\_ day  
 of \_\_\_\_\_ 1994, and duly  
 recorded in Plat Book No. \_\_\_\_\_  
 on Pages \_\_\_\_\_ thru \_\_\_\_\_.  
 DOROTHY H. WILKEN  
 Clerk Circuit Court  
 By \_\_\_\_\_ D. C.



TAS 416

Subdivision # Jonathans Grove  
 Book 73 Page 16  
 Flood Zone -  
 Zoning -  
 Quad # -  
 OE -  
 ZIP CODE -  
 PUD NAME c/ Boynton Beach  
 7/45/43

COMPUTED \_\_\_\_\_  
 DRAWN \_\_\_\_\_  
 CHECKED \_\_\_\_\_  
 APPROVED \_\_\_\_\_  
 JOB NO. 91-351